

# ULTRA<sup>®</sup>

## ARIOSTEA GREAT SURFACES

ULTRA” can be easily processed by using some simple tools. It is recommended to process the slabs on a flat work surface. It is recommended to perform the cutting operations with at least two operators. One operator is sufficient for making the holes.

### INSTRUMENTS REQUIRED

Depending on the type of cut and process to be applied to the slab, the recommended types of tools are listed below:

Handling frame with suction cups with a transport truck with wheels or double suction cups.

Cutting guide with cutting carriage for linear or diagonal cuts of up to 320 cm.

Cutting pliers.

Diamond buffer.

Wet core bits

Angle grinder with diamond blade.

### MARKING

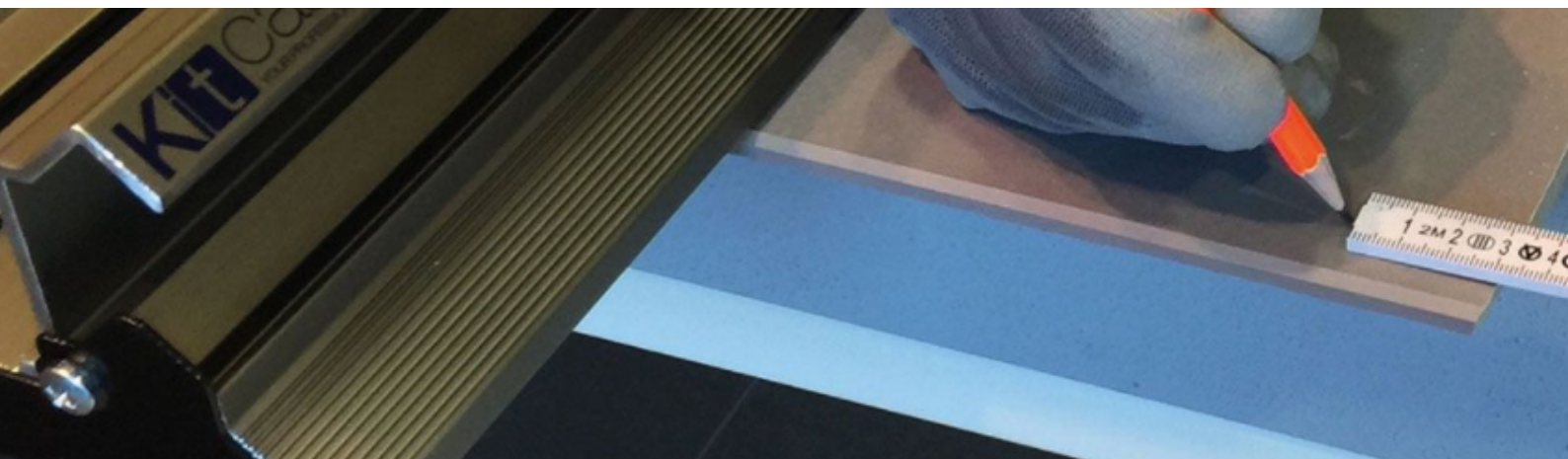
#### Linear cuts

Mark the dimension of the portion to be removed at both ends of the slab. Position the cutting guide with cutting carriage so that the roller on the cutting guide coincides with the lines marked on the slab. Lock the cutting guide with the cutting carriage in place using the suction cups.

### SCORING

To guarantee correct scoring, the pressure and movement of the cutting carriage must be constant along the whole length of the cut.

- Score one end of the slab by 5 cm pushing the cutting carriage towards the edge of the slab.
- Repeat on the other end.
- Complete the scoring up to the opposite edge of the slab



# ULTRA<sup>®</sup>

## ARIOSTEA GREAT SURFACES

### CUTTING OFF

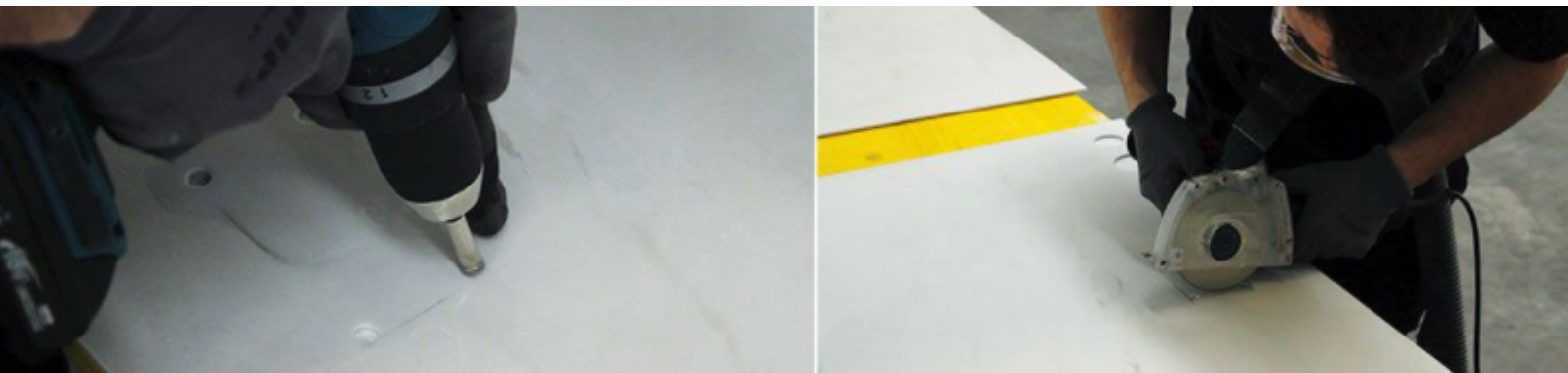
- Using the cutting guide move the slab until the scoring line protrudes by 5/10 cm from the work surface.
- Release the cutting guide from the suction cups and move it towards the middle of the slab.
- Start the cutting off process by positioning the cutting pliers in line with the line scored on the slab. Exert light and progressive pressure until you notice that the cutting off process has begun.
- Go to the opposite side and position the cutting pliers in line with the line scored on the slab. Exert light and progressive pressure until you notice that the cutting off process has begun.
- To complete the cutting off process, with the cutting pliers and exert progressive pressure downwards all along the line scored on the slab.

### THE FINISHING

of the edges on the cut side, if left visible, must be carried out using the special diamond buffer, or alternatively using appropriate resinous diamond discs

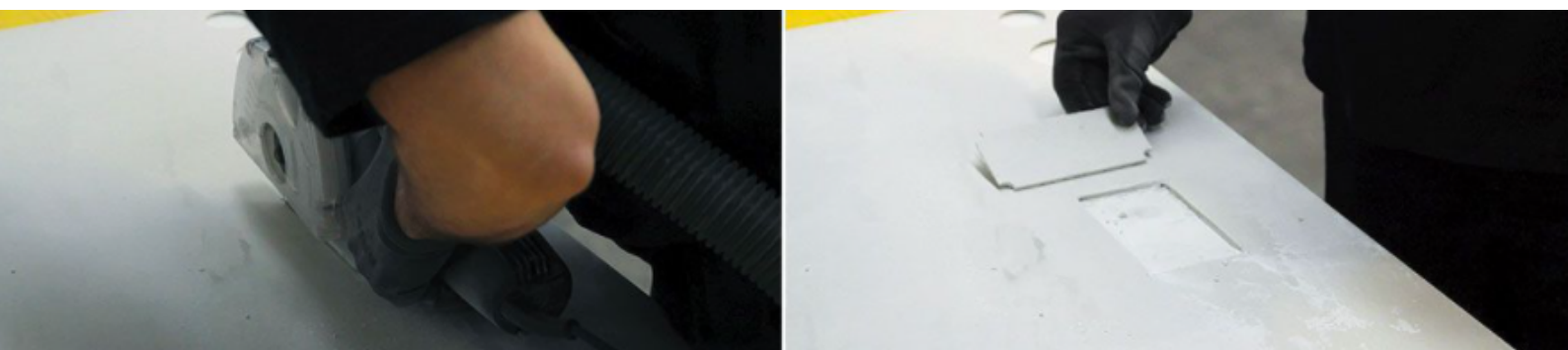
### L-SHAPED CUTS / SQUARE CUTS / CUT-OUT

- Mark the portion to be removed on the slab. Make  $\varnothing 7/8$  mm holes, using wet core diamond bits corresponding to the point where the lines traced on the slab meet. With an angle grinder equipped with a diamond blade, join the 4 holes.



### RECTANGULAR HOLES

- Mark the sides of the portion to be removed on the slab.
- Make holes of  $\varnothing 7/8$  mm, using wet core diamond bits corresponding to the 4 corners.
- Using an angle grinder equipped with a diamond blade join the 4 holes.



# ULTRA<sup>®</sup>

**ARIOSTEA** GREAT SURFACES

## HOLES

### INSTRUMENTS REQUIRED

Depending on the type of hole and process to be applied to the slab, it is recommended to use the following instruments:

- Handling frame with suction cups with a transport truck with wheels or double suction cups.
- Drill/Screwdriver.
- Wet diamond core bits (cup wheel cutters).
- Angle grinder with diamond blade.



## ROUND HOLES

- Position the “ULTRA” slab on a solid, non-slip surface (e.g. wood or concrete). Spray water onto the area where the hole is to be made.
- Begin to drill the hole at an angle of 75 ° - 85 ° and penetrate the slab about 1-2 mm deep.
- Start to make a hole at an angle of 75°-85° and penetrate into the slab with a depth of about 1-2 mm.
- Keep the drill/screwdriver at a 90° angle and make circular movements with an angle of about 5°-10°.
- Do not exert too much pressure. Do not push straight downwards. Make sure there is enough water to wet the cutter.
- Clean up the scraps once the hole has been made.

For more information phone our support office on

**0800 289 845**

